



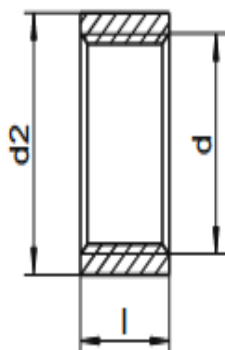
PIPE & TUBE FITTING

PRODUCT CATALOGUE



PIPE FITTINGS

DIN 2986 H Half couplings

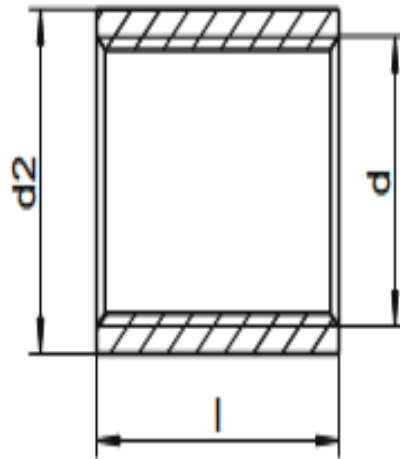


d	d2	l	NW
1/4"	17,5	11	8
3/8"	21,3	12	10
1/2"	26,4	14	15
3/4"	31,8	17	20
1"	39,5	19	25
1 1/4"	48,3	22	32
1 1/2"	54,5	22	40
2"	66,3	26	50
2 1/2"	82,0	30	65
4"	122,0	38	100

Grade	SU
●	10
●	10
●	10
●	5
●	5
●	1
●	1
●	1
●	1
●	1

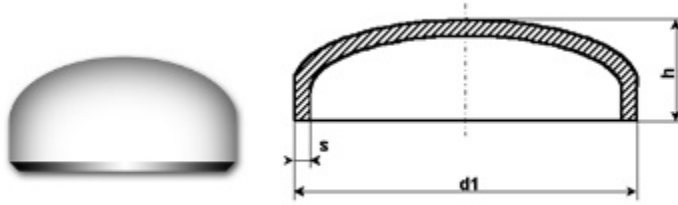
DIN 2986 G

Full couplings



d	d2	l	NW
1/4"	17,5	25	8
3/8"	21,3	26	10
1/2"	26,4	34	15
3/4"	31,8	36	20
1"	39,5	43	25
1 1/4"	48,3	48	32
1 1/2"	54,5	48	40
2"	66,3	56	50
3"	95,0	71	80

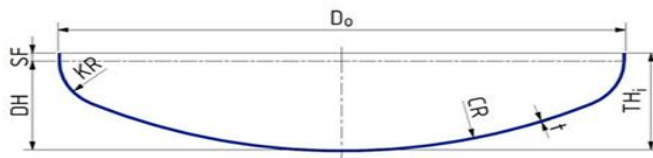
DIN 2617 END CAPS



DN	d1	s	s	s	h
15	21.3	2.0	3.2	4.0	25
20	26.9	2.3	3.2	4.0	25
25	33.7	2.6	3.2	4.0	38
32	42.4	2.6	3.6	4.0	38
40	48.3	2.6	4.0	5.0	38
50	60.3	2.9	4.5	5.6	38
65	76.1	2.9	5.0	7.1	38
80	88.9	3.2	5.6	8.0	51
100	114.3	3.6	6.3	8.8	64
125	139.7	4.0	6.3	10.0	76
150	168.3	4.5	7.1	11.0	89
200	219.1	6.3	8.0	12.5	102
250	273.0	6.3	8.8	14.2	127
300	323.9	7.1	10.0	16.0	152

DIN 28011 END CAPS

Torispherical head according to DIN 28011



Technical Data

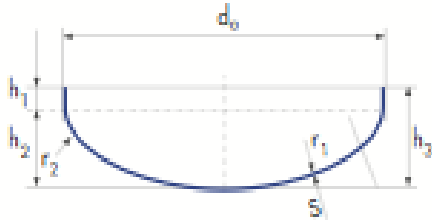
$CR = d^0$
 $KR = 0,1D_0$
 $SF = 3,5t$ or per request
 $DH = 0,1935D^0 - 0,455t^2$
 $TH^I = SF + DH$

Technical explanations

D^0 = external head diameter
 D^I = internal head diameter
 CR = crown radius
 KR = knuckle radius
 SF = straight flange height
 DH = depth of dishing
 TH^I = total internal head height
 t = wall thickness

DIN28013 CAPS

■ SEMI-ELLIPTICAL HEADS ACC. TO DIN 28013



$$r_1 = 0,8d_0$$

$$r_2 = 0,154d_0$$

$$h_1 = 3t$$

$$h_2 = 0,255d_0 - 0,635t$$

$$h_3 = h_1 + h_2$$

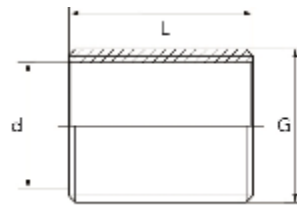
Dimensions: up to 5400 mm diameter depending upon thickness of material and wall thickness up to 32 mm depending upon material and diameter; custom forms and dimensions on request

Half tube spiral: either tacked or permanently welded as required

Surface treatment:

- Polishing: internally and externally to 0,2 μm surface smoothness for diameters up to 5200mm
- Pickling: for stainless steel heads
- Blasting: sand-blasting for ferritic steels and glass granulate blasting for austenitic steels

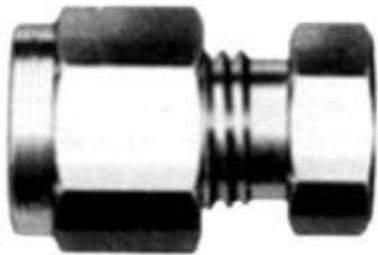
DIN2982 (THREADED NIPPLES)



DN	G	L	d	kg
6	1/8"	16	6,2	0,004
8	1/4"	18	8,9	0,006
10	3/8"	22	12,6	0,010
15	1/2"	25	16,1	0,019
20	3/4"	30	21,7	0,028
25	1"	35	27,3	0,043
32	1 1/4"	38	36,0	0,061
40	1 1/2"	38	41,9	0,096
50	2"	45	53,1	0,165
65	2 1/2"	55	68,9	0,180
80	3"	60	80,9	0,260
100	4"	70	0,370	

CAPS

CAPS END OF FRACTIONAL TUBE



T
TUBE
O.D
(INCH.)
1/16
1/8
3/16
1/4
5/16
3/8
1/2
5/8
3/4
7/8
1

CONTACT INFORMATION

Invicta India Pvt. Ltd.
N-258/B GK-1
New Delhi
India

REX Consolidated
80 DLF Industrial Area Phase I
Faridabad Haryana-121003
India

© Copyright 2020 Invicta India Pvt. Ltd.

All information and data stated in this Product Range document has been compiled with utmost care. Nevertheless, Invicta accepts no liability for any errors, omissions or other inaccuracies contained herein. Subject to change without notice. Reprinting or reproduction, in whole or in part, including of photographs, illustrations or graphics, is not permitted without the prior written consent of Invicta India Pvt. Ltd.. We reserve all rights in connection with this document. Any similarity or resemblance is unintended and is merely a coincidence.

The vehicle applications cited in this Product Range document may possibly be valid only up to the date printed on the last page of the document. All references made in this Product Range document to the item numbers of vehicle manufacturers and/or competitors are provided for the purpose of comparison only. Such information is not allowed to be used in invoices issued to vehicle owners.

For enquiries, please email us : rahul@invictaindia.com

All drawings & illustrations are the property right of INVICTA and cannot be copied, duplicated or re-printed in any form without the prior written consent from INVICTA

Invicta Copyright @ 2016
All Right Reserved