



# FLANGE

## PRODUCT CATALOGUE



All drawings & illustrations are the property right of INVICTA and cannot be copied, duplicated or re-printed in any form without the prior written consent from INVICTA

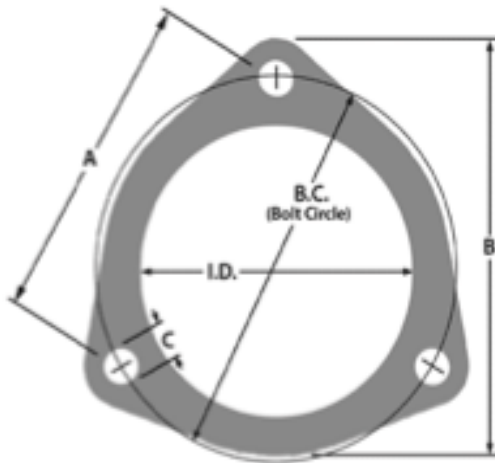
Invicta Copyright @ 2016  
All Right Reserved

[www.invictaindia.com](http://www.invictaindia.com)

## 3 BOLT FLANGES

Flange Thickness :  $5/16''$ ,  $3/8''$

Material : CR Steel, SS-409, SS-304



I.D	Bolt Circle	A	B	C
2.00"	3.13" / 79.5mm	2.71" / 68.8mm	3.43"	.394"
2.25"	3.13" / 79.5mm	2.71" / 68.8mm	3.43"	.394"
2.50"	3.50" / 83mm	3.03" / 77mm	3.81"	.394"
2.75"	3.94" / 100mm	3.41" / 86.6mm	4.28"	.394"
3.00"	3.94" / 100mm	3.41" / 86.6mm	4.28"	.394"
3.50"	4.46" / 113.3mm	3.86" / 98mm	4.80"	.394"

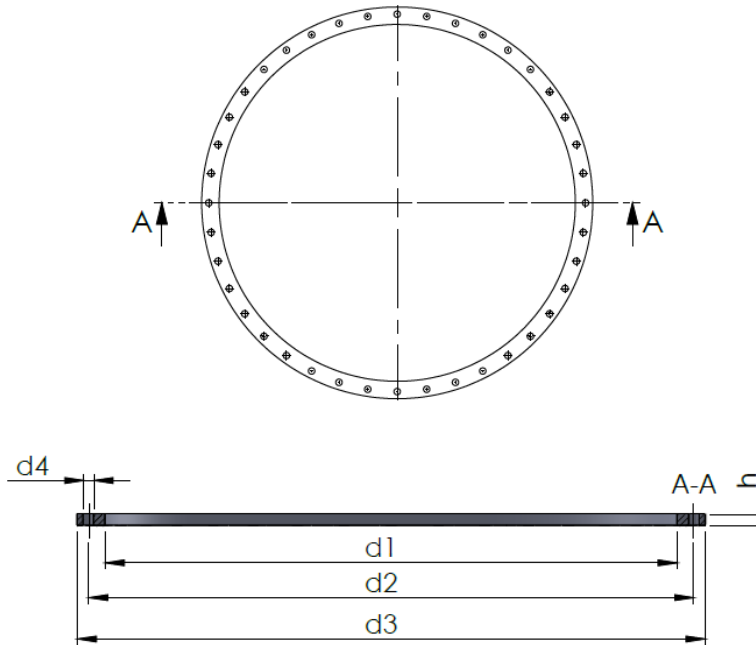
# DIN EN 1092 Flanges

Material : CR Steel, SS-409, SS-304

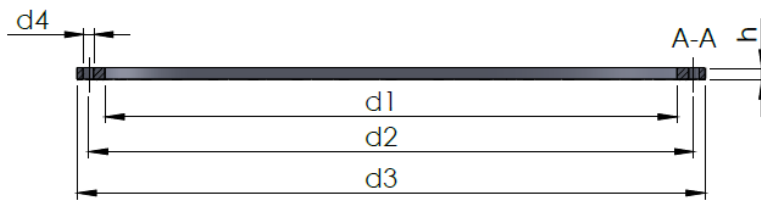
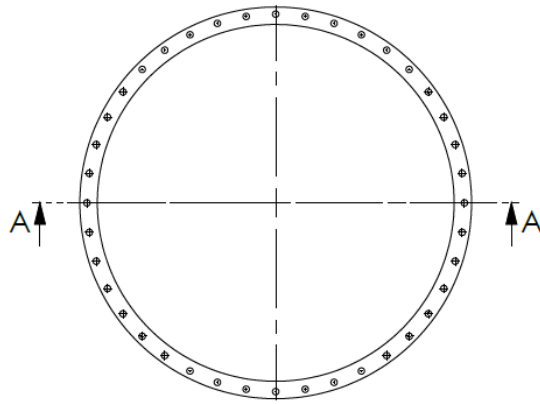
<p>Not shown are Typ 02 in 35, Typ 02 in 36, Typ 02 in 37</p> <p>Typ 01      Typ 02 in 32      Typ 02 in 33</p> <p>Typ 05      Typ 11      Typ 12      Typ 13      Typ 21</p>	
	<p>Type A Flat face      Type B Raised face (B1 and B2)      Type C Tongue      Type D Groove      Type E Spigot      Type F Recess      Type G O-ring spigot      Type H O-ring groove</p>

# DIN EN 86044 Flanges

Material : CR Steel, SS-409, SS-304



DN nominal width	Inner diameter d1	Outer diameter d3	Width	Material thickness h	Perforation pitch d2	Number of perforations	Perforation diameter d4	Screws	Weight
32	43	140	-	15	100	4	18	M16	1,75
40	48	150	-	15	110	4	18	M16	1,99
50	61	165	-	15	125	4	18	M16	2,61
65	77	185	-	15	145	4	18	M16	3,14
80	90	200	-	15	160	8	18	M16	3,93
100	116	220	-	15	180	8	18	M16	4,31
125	142	250	-	15	210	8	18	M16	5,76
150	171	285	-	15	240	8	22	M20	7,07
200	222	320	-	15	280	8	18	M16	5,24
250	276	375	-	15	335	12	18	M16	6,36
300	327	440	-	15	395	12	22	M20	8,55
350	359	490	-	15	445	12	22	M20	10,97
400	410	540	-	15	495	16	22	M20	12,18
450	461	595	-	15	550	16	22	M20	13,96
500	512	645	-	15	600	20	22	M20	15,18
550	563	-	70	20	650	20	22	M20	21,86
600	614	-	70	20	700	20	22	M20	23,62
650	665	-	70	20	750	20	22	M20	25,38
700	716	-	70	20	800	24	22	M20	27,14
750	767	-	70	20	860	24	22	M20	28,9
800	818	-	70	20	900	24	22	M20	30,66
850	870	-	70	20	950	28	22	M20	32,45
900	920	-	70	20	1010	28	22	M20	34,18

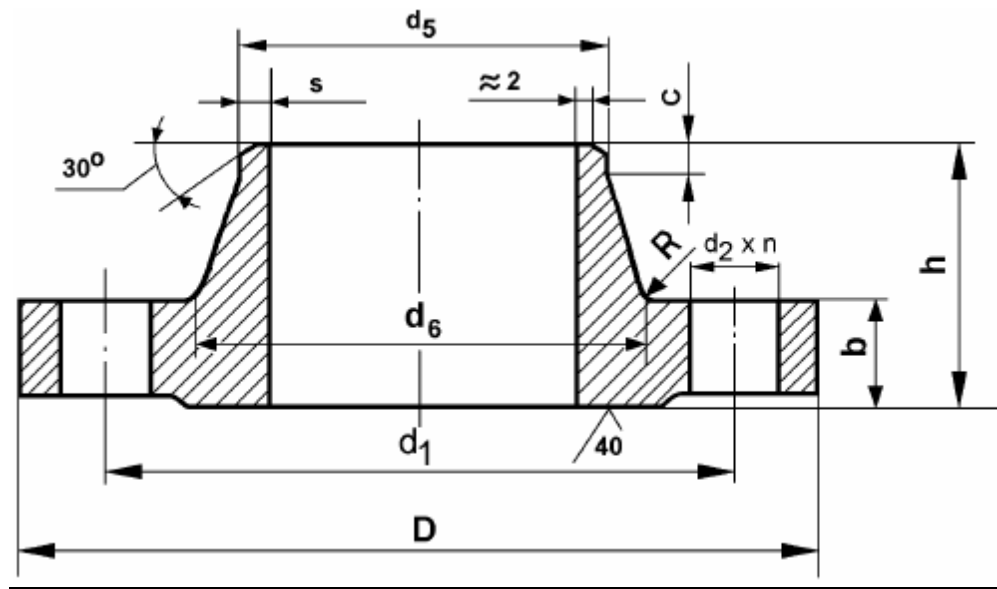


DN nominal width	Inner diameter d1	Outer diameter d3	Width	Material thickness h	Perforation pitch d2	Number of perforations	Perforation diameter d4	Screws	Weight
950	970	-	70	20	1060	28	22	M20	35,91
1000	1022	-	70	20	1110	32	22	M20	37,7
1100	1126	-	70	20	1210	32	22	M20	41,29
1200	1226	-	70	20	1310	36	22	M20	44,75
1300	1326	-	70	20	1410	40	22	M20	48,2
1400	1426	-	70	20	1510	40	22	M20	51,65
1500	1526	-	70	20	1610	44	22	M20	55,1
1600	1626	-	70	20	1710	48	22	M20	58,56
1700	1726	-	70	20	1810	48	22	M20	62,01
1800	1826	-	70	20	1910	52	22	M20	65,46
1900	1926	-	70	20	2010	56	22	M20	68,91
2000	2026	-	70	20	2110	56	22	M20	72,37
2100	2126	-	70	20	2210	60	22	M20	75,82
2200	2226	-	70	20	2310	64	22	M20	79,27
2300	2326	-	70	20	2410	64	22	M20	82,72
2400	2426	-	70	20	2510	68	22	M20	86,18
2500	2526	-	70	20	2610	72	22	M20	89,63
2600	2626	-	70	20	2710	72	22	M20	93,08
2700	2726	-	70	20	2810	76	22	M20	96,53
2800	2826	-	70	20	2910	80	22	M20	99,99
2900	2926	-	70	20	3010	80	22	M20	103,44
3000	3026	-	70	20	3110	84	22	M20	106,89

## DIN 2638 FLANGE

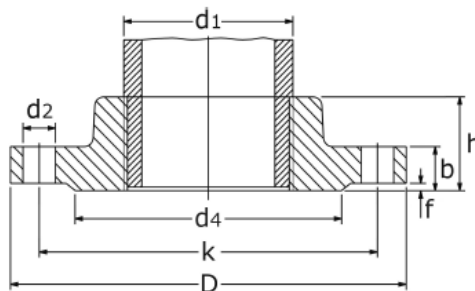
### Material quality

Up to Order  
(Carbon, alloy or stainless steel)



DN	D	b	h	$d_5$	$d_5$	s	$d_6$	$d_1$	$d_2$	n	R	c	kg
10	100	20	45	17,2	17,2	2,6	32	70	14	4	4	6	1,10
15	105	20	45	21,3	21,3	2,6	34	75	14	4	4	6	1,20
25	140	24	58	30	33,7	2,9	48	100	18	4	4	8	2,61
40	170	28	64	44,5	48,3	3,6	65	125	22	4	6	10	4,35
50	195	30	75	57	60,3	4	86	145	26	4	6	10	6,25
65	220	34	82	76,1	76,1	5	108	170	26	8	6	12	8,70
80	230	36	86	88,9	88,9	6,3	120	180	26	8	8	12	10
100	265	40	100	108	114,3	8	145	210	30	8	8	12	14,9
125	315	44	115	133	139,7	10	180	250	33	8	8	14	23,9
150	355	50	128	159	168,3	12,5	210	290	33	12	10	14	33,9
200	430	60	140	219,1	219,1	16	278	360	36	12	10	16	60,1
250	515	68	155	273	273	20	340	430	42	12	12	18	96
300	585	78	175	323,9	323,9	22	400	500	42	16	12	18	138

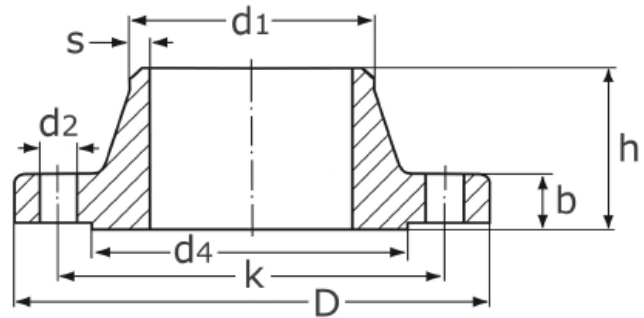
## DIN2566 FLANGE



### technical product sheet

DN	d1	Rp	Typ	D	b	k	h	d2	M	d4	kg	Art.-Nr.
8	13,5	1/4"	DIN 2566	80	12	55	18	11	4 x M10	38	0,380	FG-014-000
10	17,2	3/8"	DIN 2566	90	14	60	20	14	4 x M12	40	0,580	FG-038-000
15	21,3	1/2"	DIN 2566	95	14	65	20	14	4 x M12	45	0,660	FG-012-000
20	26,9	3/4"	DIN 2566	105	16	75	24	14	4 x M12	58	0,980	FG-034-000
25	33,7	1"	DIN 2566	115	16	85	24	14	4 x M12	68	1,133	FG-100-000
32	42,4	1 1/4"	DIN 2566	140	16	100	26	18	4 x M16	78	1,740	FG-114-000
40	48,3	1 1/2"	DIN 2566	150	16	110	26	18	4 x M16	88	1,841	FG-112-000
50	60,3	2"	DIN/ EN	165	18	125	28	18	4 x M16	102	2,682	FG-200-000
65	76,1	2 1/2"	DIN 2566	185	18	145	32	18	4 x M16	122	3,326	FG-212-000
65	76,1	2 1/2"	EN 1092-1	185	18	145	32	18	8 x M16	122	3,260	FG-212-E00
80	88,9	3"	DIN/ EN	200	20	160	34	18	8 x M16	138	4,240	FG-300-000
100	114,3	4"	DIN/ EN	220	20	180	40	18	8 x M16	158	4,749	FG-400-000
125	139,7	5"	EN 1092-1	250	22	210	40	18	8 x M16	188	6,130	FG-500-000
150	168,3	6"	EN 1092-1	285	22	240	44	22	8 x M20	212	8,120	FG-600-000

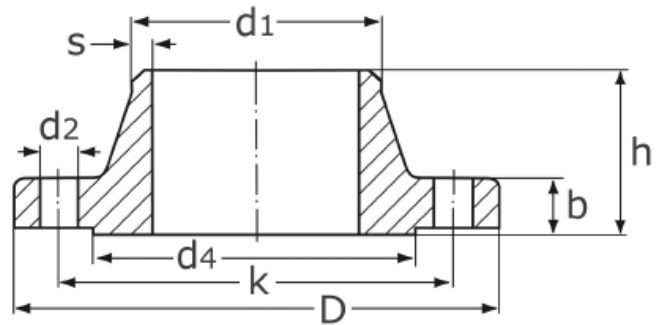
## DIN2627 FLANGE



### technical product sheet

DN	d1	D	k	d2	M	b	h	h3	d4	s	kg	Art.-Nr.
10	17,2	125	85	18	4 x M16	28	65	8	40	3,6	2,550	FL-017-400
15	26,9	145	100	22	4 x M20	30	68	8	45	5,0	3,620	FL-026-400
25	42,4	180	130	26	4 x M24	38	90	10	68	7,1	7,450	FL-042-400
40	60,3	220	165	30	4 x M27	48	110	12	88	10,0	14,100	FL-060-400
50	76,1	235	180	30	8 x M27	52	120	15	102	12,5	16,700	FL-076-400
65	101,6	290	225	33	8 x M30	64	135	18	122	16,0	31,600	FL-101-400
80	114,3	305	240	33	8 x M30	68	150	20	138	17,5	38,400	FL-114-400
100	139,7	370	295	39	8 x M36	80	175	25	162	22,2	67,300	FL-139-400
125	193,7	415	340	39	12 x M36	92	200	30	188	30,0	94,500	FL-193-400
150	219,1	475	390	42	12 x M39	105	225	35	218	35,0	145,000	FL-219-400
200	273,0	585	490	48	16 x M45	130	280	40	285	40,0	270,000	FL-273-400

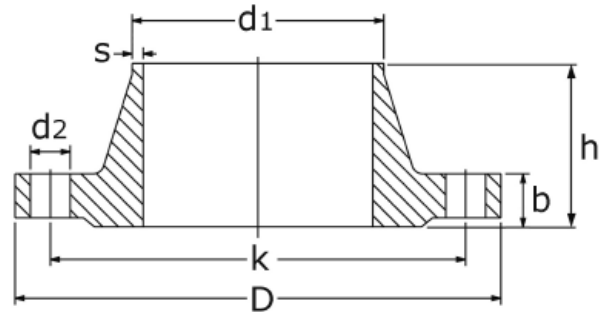
## DIN2628 FLANGE



### technical product sheet

DN	d1	D	k	d2	M	b	h	h3	N1	d4	f	s	kg	Art.-Nr.
15	21,3	130	90	18	4 x M16	26	60	6	48	45	2	2,6	2,470	FL-021-250
25	33,7	150	105	22	4 x M20	28	65	8	60	68	2	3,6	3,510	FL-033-250
40	48,3	185	135	26	4 x M24	34	80	10	84	88	3	5,0	6,837	FL-048-250
50	60,3	200	150	26	8 x M24	38	85	10	95	102	3	6,3	8,343	FL-060-250
65	76,1	230	180	26	8 x M24	42	95	12	124	122	3	8,0	12,791	FL-076-250
80	101,6	255	200	30	8 x M27	46	102	12	136	138	3	11,0	17,051	FL-101-250
100	127,0	300	235	33	8 x M30	54	120	14	164	162	3	14,2	26,000	FL-127-250
125	152,4	340	275	33	12 x M30	60	140	16	200	188	3	16,0	40,000	FL-152-250
150	177,8	390	320	36	12 x M33	68	160	18	240	218	3	17,5	0,000	FL-177-250
200	244,5	485	400	42	12 x M39	82	190	25	305	285	3	25,0	0,000	FL-244-250
250	298,5	585	490	48	16 x M45	100	215	30	385	345	3	32,0	0,000	FL-298-250

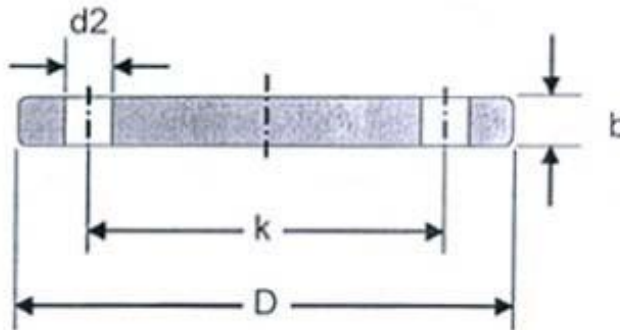
## DIN2629 FLANGE



### technical product sheet

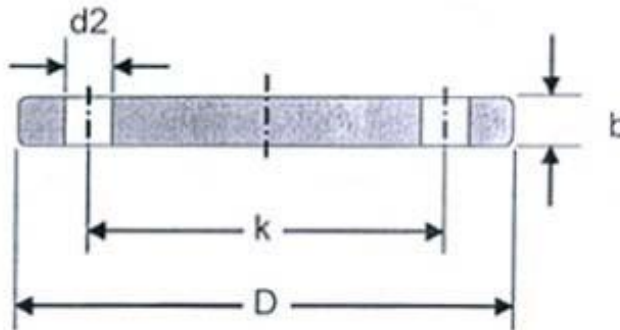
DN	d1	D	k	d2	M	b	h	d4	s	kg	Art.-Nr.
10	17,2	125	85	18	4 x M16	24	58	40	2,6	2,140	FL-017-320
15	21,3	130	90	18	4 x M16	26	60	45	3,2	2,470	FL-021-320
25	33,7	160	115	22	4 x M20	34	78	68	5,0	5,180	FL-033-320
40	48,3	195	145	26	4 x M24	38	88	88	6,3	8,250	FL-048-320
50	63,5	210	160	26	8 x M24	42	100	102	8,0	10,700	FL-063-320
65	88,9	255	200	30	8 x M27	51	120	122	11,0	19,500	FL-088-320
80	101,6	275	220	30	8 x M27	55	130	138	12,5	25,200	FL-101-320
100	133,0	335	265	36	8 x M33	65	145	162	16,0	42,500	FL-133-320
125	168,3	380	310	36	12 x M33	75	175	188	20,0	63,600	FL-168-320
150	193,7	425	350	39	12 x M36	84	195	218	25,0	91,500	FL-193-320
200	244,5	525	440	42	16 x M39	103	235	285	30,0	172,000	FL-244-320
250	323,9	640	540	52	16 x M48	125	300	345	40,0	312,000	FL-323-320

## DIN2527 BLIND FLANGE



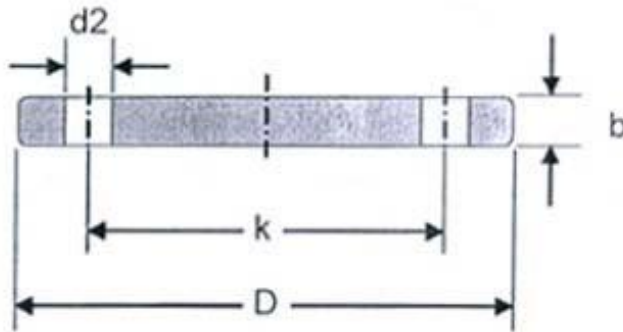
PN6							PN10				
DIN	No. of holes	D	b	k	d2	KG	D	b	k	d2	KG
10	4	75	12	50	11	0.38	90	14	60	14	0.63
15	4	80	12	55	11	0.44	95	14	65	14	0.71
20	4	90	14	65	11	0.66	105	16	75	14	1.01
25	4	100	14	75	11	0.82	115	16	85	14	1.23
32	4	120	14	90	14	1.18	140	16	100	18	1.81
40	4	130	14	100	14	1.39	150	16	110	18	2.09
50	4	140	14	110	14	1.62	165	18	125	18	2.88
65	4	160	14	130	14	2.14	185	18	145	18	3.65
80	4	190	16	150	48	3.43	200	20	160	18	4.61
100	4	210	16	170	18	4.22	220	20	180	18	5.65
125	8	240	18	200	18	6.1	250	22	210	18	8.13
150	8	265	18	225	18	7.51	285	22	240	22	10.49
175	8	295	20	255	18	10.41	315	24	270	22	14.11
200	8	320	20	280	18	12.31	340	24	295	22	16.53
250	12	375	22	335	18	18.55	395	26	350	22	24.08
300	12	440	22	395	22	25.47	445	26	400	22	30.81
350	12	490	22	445	22	31.78	505	26	460	22	39.64
400	16	540	22	495	22	38.5	565	26	515	26	49.44
500	20	645	24	600	22	60.13	670	28	620	26	75.16
600	20	755	28	705	26	96.07	780	30	725	30	109.2
700	24	860	30	810	26	133.8	895	32	840	30	153.77
800	24	975	32	920	30	183.29	1015	36	950	33	222.86
900	24	1075	36	1020	30	251.7	1115	40	1050	33	299.08
1000	28	1175	42	1120	30	350.98	1230	46	1160	36	418.78

## DIN2527 BLIND FLANGE



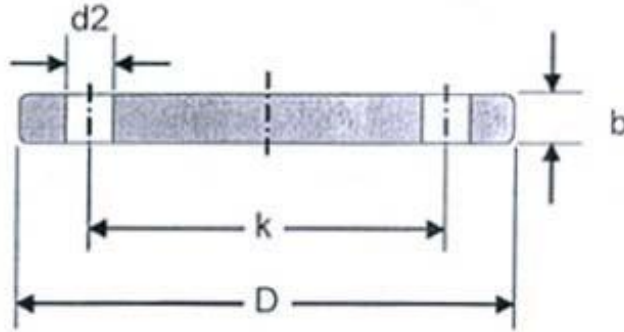
PN16							PN25				
DIN	No. of holes	D	b	k	d2	KG	D	b	k	d2	KG
10	4	90	14	60	14	0.63	90	16	60	14	0.72
15	4	95	14	65	14	0.71	95	16	65	14	0.81
20	4	105	16	75	14	1.01	105	18	75	14	1.14
25	4	115	16	85	14	1.23	115	18	85	14	1.38
32	4	140	16	100	18	1.81	140	18	100	18	2.03
40	4	150	16	110	18	2.09	150	18	110	18	2.35
50	4	165	18	125	18	2.88	165	20	125	18	3.2
65	4	185	18	145	18	3.65	185	22	145	18	4.29
80	8	200	20	160	18	4.61	200	24	160	18	5.54
100	8	220	20	180	18	5.65	235	24	190	22	7.6
125	8	250	22	210	18	8.13	270	26	220	26	10.82
150	8	285	22	240	22	10.49	300	28	250	26	14.6
175	8	315	24	270	22	14.11	330	28	280	26	17.4
200	12	340	24	295	22	16.26	360	30	310	26	22.47
250	12	405	26	355	26	24.99	425	32	370	30	33.51
300	12	460	28	410	26	35.13	485	34	430	30	46.29
350	16	520	30	470	26	48.01	555	38	490	33	68.08
400	16	580	32	525	30	83.53	620	40	550	36	89.59
500	20	715	36	650	33	108.63	730	45	660	36	140.66
600	20	780	38	770	36	136.47	845	48	770	39	202.3
700	24	895	40	840	36	189.87	960	50	875	42	271.05
800	24	1015	44	950	39	269.57	1085	54	990	48	373.52
900	28	1115	48	1050	39	355.31	1185	58	1090	48	479.07
1000	28	1230	52	1170	42	469.2	1320	62	1210	56	632.47

## DIN2527 BLIND FLANGE



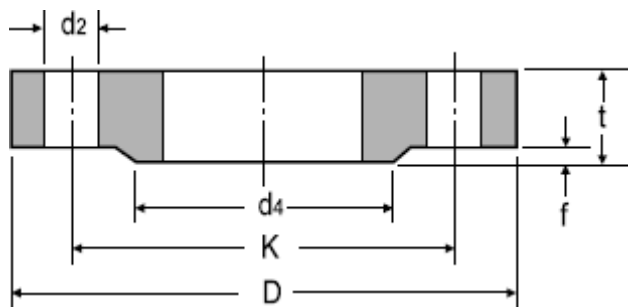
DIN	No. of holes	PN40					PN64				
		D	b	k	d2	KG	D	b	k	d2	KG
10	4	90	16	60	14	0.72	20	70	40	2	14
15	4	95	16	65	14	0.81	20	75	45	2	14
20	4	105	18	75	14	1.14	24	100	68	2	18
25	4	115	18	85	14	1.38	24	110	78	2	22
32	4	140	18	100	18	2.03	26	125	88	3	22
40	4	150	18	110	18	2.35	26	135	102	3	22
50	4	165	20	125	18	3.2	26	160	122	3	22
65	8	185	22	145	18	4.29	28	170	138	3	22
80	8	200	24	160	18	5.54	30	200	162	3	26
100	8	235	24	190	22	7.6	34	240	188	3	30
125	8	270	26	220	26	10.82	36	280	218	3	33
150	8	300	28	250	26	14.6	40	310	260	3	33
175	12	350	32	295	30	22.04	42	345	285	3	36
200	12	375	34	320	30	27.21	46	400	345	3	38
250	12	450	38	385	33	44.38	52	460	410	4	36
300	16	515	42	450	33	64.17	56	525	465	4	39
350	16	580	46	510	36	89.52	60	585	535	4	42
400	16	660	50	585	39	126.76	-	-	-	-	-
500	20	755	56	670	42	184.63	-	-	-	-	-
600	20	890	62	795	48	285.17	-	-	-	-	-
700	24	995	64	900	48	368.83	-	-	-	-	-
800	24	1140	70	1030	56	528.39	-	-	-	-	-
900	28	1250	76	1140	56	690.99	-	-	-	-	-
1000	28	1360	84	1250	56	912.42	-	-	-	-	-

## DIN2527 BLIND FLANGE



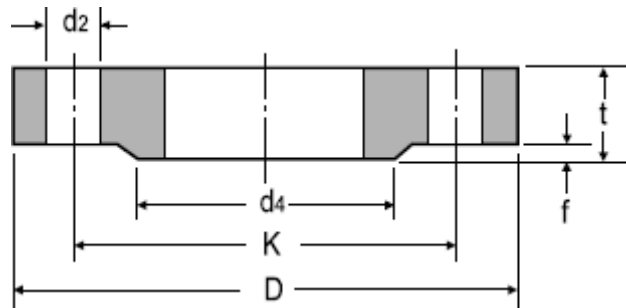
PN100								
DN	D	b	k	D4	F	No. of holes	d2	KG
10	100	20	70	40	2	4	14	1.04
15	105	20	75	45	2	4	14	1.16
25	140	24	100	68	2	4	18	2.54
32	155	24	110	78	2	4	22	3.07
40	170	26	125	88	3	4	22	3.97
50	195	28	145	102	3	4	26	5.64
65	220	30	170	122	3	8	26	7.43
80	230	32	180	138	3	8	26	8.84
100	265	36	210	162	3	8	30	13.31
125	315	40	250	188	3	8	33	21.3
150	355	44	290	218	3	12	33	29.43
175	385	48	320	260	3	12	33	38.75
200	430	52	360	285	3	12	36	52.66
250	505	60	430	345	3	12	39	85.41
300	585	68	500	410	4	16	42	128.05
350	655	74	560	465	4	16	48	174.53

## DIN 15 FLAT FLANGE FOR WELDING (SLIP ON) PN16



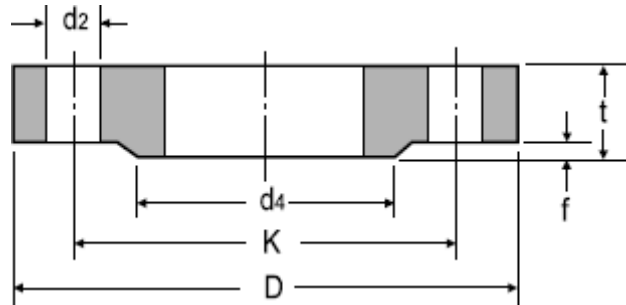
DN	ISO	DIN	d4	D	t	f	K $\psi$	No. of Holes	d2	KG
10	17.2	14	40	90	-	2	60	4	14	0.63
15	21.3	20	45	95	14	2	65	4	14	0.72
20	26.9	25	58	105	16	2	75	4	14	1.01
25	33.7	30	68	115	16	2	85	4	14	1.23
32	42.4	38	78	140	16	2	100	4	18	1.80
40	48.3	44.5	88	150	16	3	110	4	18	2.09
50	60.3	57	102	165	18	3	125	4	18	2.88
65	76.1	-	122	185	18	3	145	4	18	3.66
80	88.9	-	138	200	20	3	160	8	18	4.77
100	114.3	108	158	220	20	3	180	8	18	5.65
125	139.7	133	188	250	22	3	210	8	18	8.42
150	168.3	159	212	285	22	3	240	8	23	10.40
200	219.1	216	268	340	24	3	295	12	23	16.10
250	273	267	320	405	26	3	355	12	27	24.90
300	323.9	318	378	460	28	4	410	12	27	35.10
350	355.6	368	438	520	30	4	470	16	27	47.80
400	406.4	419	490	580	32	4	525	16	30	63.50
500	508	521	610	715	36	4	650	20	33	102.00
600	609.6	622	725	840	40	5	770	20	36	-
700	711.2	720	795	910	-	5	840	24	36	-
800	812.8	820	900	1025	-	5	950	24	39	-
900	914.4	920	1000	1125	-	5	1050	28	39	-
1000	1016	1020	1115	1255	-	5	1170	28	42	-

## DIN 16 FLAT FLANGE FOR WELDING (SLIP ON) PN25



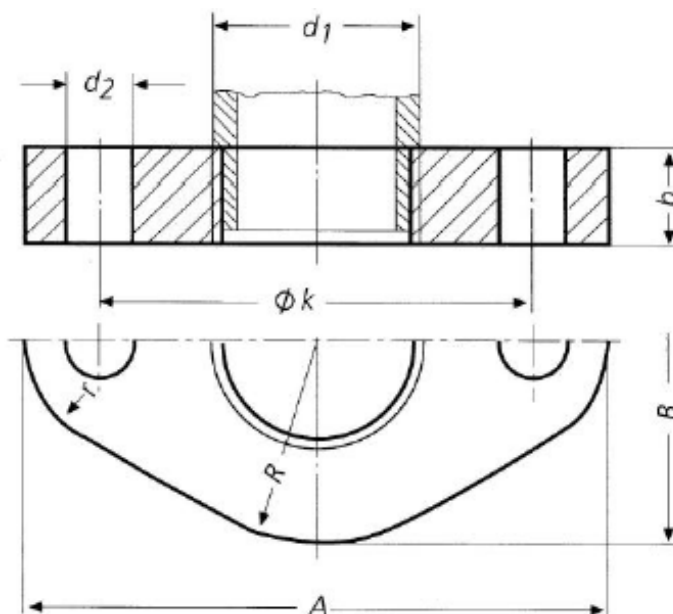
DN	ISO	DIN	d4	D	t	f	K $\Psi$	No. of Holes	d2	KG
10	17.2	14	40	90	-	2	60	4	14	0.72
15	21.3	20	45	95	16	2	65	4	14	0.81
20	26.9	25	58	105	18	2	75	4	14	1.24
25	33.7	30	68	115	18	2	85	4	14	1.38
32	42.4	38	78	140	18	2	100	4	18	2.03
40	48.3	44.5	88	150	18	3	110	4	18	2.35
50	60.3	57	102	165	20	3	125	4	18	3.20
65	76.1	-	122	185	22	3	145	4	18	4.29
80	88.9	-	138	200	24	3	160	8	18	5.88
100	114.3	108	162	235	24	3	190	8	23	7.54
125	139.7	133	188	270	26	3	220	8	27	10.80
150	168.3	159	218	300	28	3	250	8	27	14.50
200	219.1	216	278	360	30	3	310	12	27	22.30
250	273	267	335	425	32	3	370	12	30	33.50
300	323.9	318	395	485	34	4	430	16	30	46.30
350	355.6	368	450	555	38	4	490	16	33	68.00
400	406.4	419	505	620	40	4	550	16	36	89.70
500	508	521	615	730	44	4	660	20	36	138.00
600	609.6	622	720	845	-	5	770	20	39	-
700	711.2	720	820	960	-	5	870	24	42	-
800	812.8	820	930	1085	-	5	990	24	48	-
900	914.4	920	1030	1185	-	5	1090	28	48	-
1000	1016	1020	1140	1320	-	5	1210	28	56	-

## DIN 17 FLAT FLANGE FOR WELDING (SLIP ON) PN40



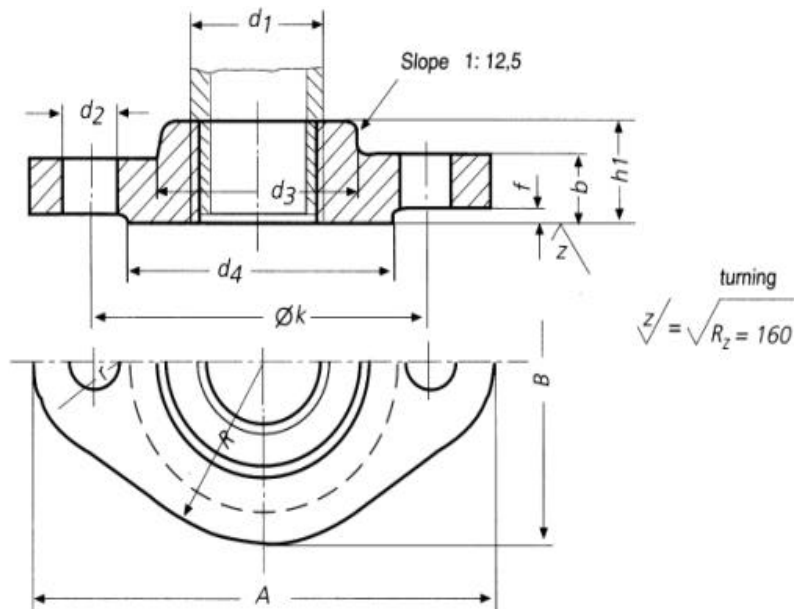
DN	ISO	DIN	d4	D	t	f	K $\Psi$	No. of Holes	d2	KG
10	17.2	14	40	90	-	2	60	4	14	0.72
15	21.3	20	45	95	16	2	65	4	14	0.81
20	26.9	25	58	105	18	2	75	4	14	1.24
25	33.7	30	68	115	18	2	85	4	14	1.38
32	42.4	38	78	140	18	2	100	4	18	2.03
40	48.3	44.5	88	150	18	3	110	4	18	2.35
50	60.3	57	102	165	20	3	125	4	18	3.20
65	76.1	-	122	185	22	3	145	4	18	4.29
80	88.9	-	138	200	24	3	160	8	18	5.88
100	114.3	108	162	235	24	3	190	8	23	7.54
125	139.7	133	188	270	26	3	220	8	27	10.80
150	168.3	159	218	300	28	3	250	8	27	14.50
175	193.7	191	260	350	32	3	295	12	30	22.10
200	219.1	216	285	375	34	3	320	12	30	27.20
250	273	267	345	450	38	3	385	12	33	43.80
300	323.9	318	410	515	42	4	450	16	33	63.30
350	355.6	368	465	580	46	4	510	16	36	89.50
400	406.4	419	535	660	50	4	585	16	39	127.00
500	508	521	615	755	52	4	670	20	42	172.00

## DIN 2558 OVAL PLAIN THREADED FLANGE PN6



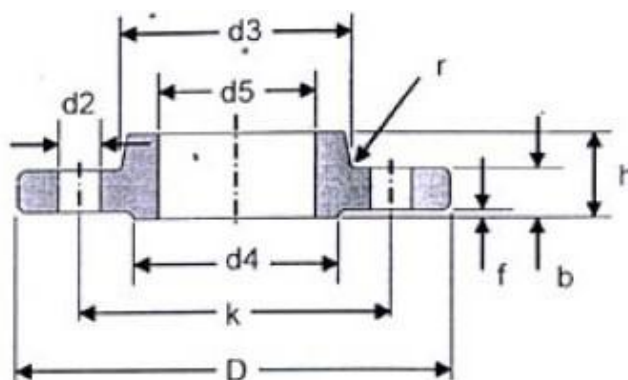
DN	d1	Thread DIN 2999	A	B	b	$\phi k$	R	r	Thread	d2	KG
6	10.2	R 1/8	64	32	12	40	16	10	M10	11	0.119
8	13.5	R 1/4	72	36	12	45	18	11	M10	11	0.147
10	17.2	R 3/8	75	40	12	50	20	12	M10	11	0.165
15	21.3	R 1/2	80	45	12	55	22,5	13	M10	11	0.194
20	26.9	R 3/4	90	64	14	65	32	18	M10	11	0.373
25	33.7	R 1	100	72	14	75	36	20	M10	11	0.455
32	42.4	R 1-1/4	118	85	16	95	42.5	22	M12	14	0.675
40	48.3	R 1-1/2	132	95	16	100	47.5	25	M12	14	0.850
50	60.3	R 2	140	100	16	110	50	28	M12	14	0.882
65	76.1	R 2-1/2	160	118	16	130	59	32	M12	14	1.100
80	88.9	R 3	190	140	18	150	70	38	M16	18	1.760
100	114.3	R 4	210	160	18	170	80	42	M16	18	1.890

## DIN 2561 OVAL FLANGE WITH NECK THREADED PN6 AND PN10



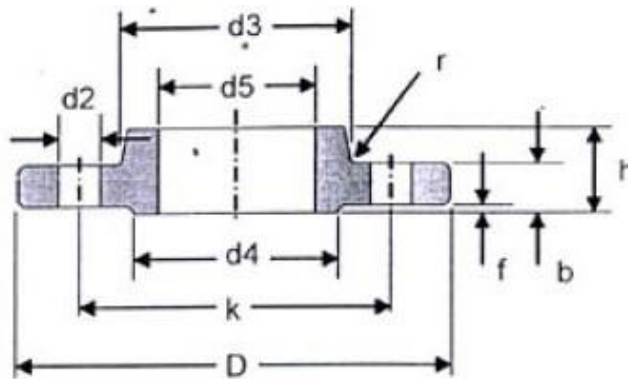
DN	d1	Thread DIN 2999	A	B	b	k	R	r	h1	d3	d4	f	Thread	d2	KG
6	10.2	R 1/8	75	40	12	50	20	12	18	20	32	2	M10	11	0.172
8	13.5	R 1/4	80	45	12	55	22,5	13	18	25	38	2	M10	11	0.21
10	17.2	R 3/8	90	50	14	60	25	15	20	30	40	2	M12	14	0.295
15	21.3	R 1/2	100	56	14	65	28	16	20	35	45	2	M12	14	0.365
20	26.9	R 3/4	105	75	16	75	37,5	21	24	45	58	2	M12	14	0.622
25	33.7	R 1	118	85	16	85	42,5	22	24	52	68	2	M12	14	0.777
32	42.4	R 1-1/4	140	100	16	100	50	28	26	60	78	2	M16	18	1.07
40	48.3	R 1-1/2	150	112	16	110	56	30	26	70	88	3	M16	18	1.26

## DIN 20 THREADED FLANGE WITH NECK PN6



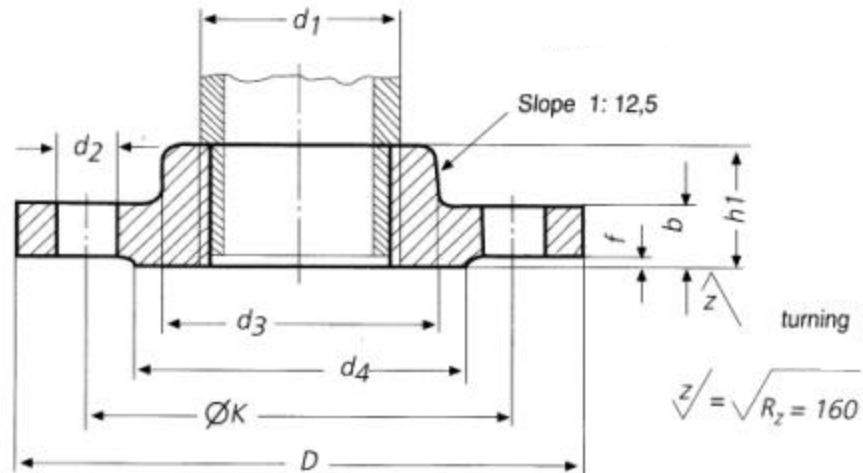
DN	D1	DIN 2999	D	b	k	h	d3	d4	f	No. of holes	d2	KG
6	10.2	R1/8	65	10	40	18	18	25	2	4	11.5	0.19
8	13.5	R1/4	70	10	45	18	22	30	2	4	11.5	0.23
10	17.2	R3/8	75	12	50	20	25	35	2	4	11.5	0.32
15	21.3	R1/2	80	12	55	20	30	40	2	4	11.5	0.37
20	26.9	R3/4	90	14	65	24	40	50	2	4	11.5	0.58
25	33.7	R1	100	14	75	24	50	60	2	4	11.5	0.73
32	42.4	R1.1/4	120	14	90	26	60	70	2	4	14	1.05
40	48.3	R1.1/2	130	14	100	26	70	80	3	4	14	1.2
50	50.3	R2	140	14	110	28	80	90	3	4	14	1.54
65	76.1	R2.1/2	160	14	130	32	100	110	3	4	14	1.87
80	88.9	R3	190	16	150	34	110	128	3	4	18	2.78
100	114.3	R4	210	16	170	38	130	148	3	4	18	3.07
150	139.7	R5	240	18	200	40	160	178	3	8	18	4.33
200	168.3	R6	285	18	225	44	185	202	3	8	18	4.81

## DIN 21 THREADED FLANGE WITH NECK PN16



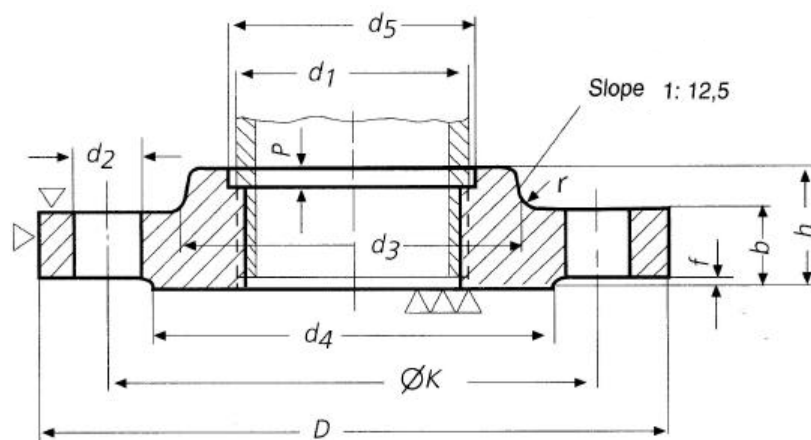
DN	D1	DIN 2999	D	b	k	h	d3	d4	f	No. of holes	d2	KG
6	10.2	R1/8	75	12	50	18	20	32	2	4	11	0.33
8	13.5	R1/4	80	12	55	18	25	38	2	4	11	0.39
10	17.2	R3/8	90	14	60	20	30	40	2	4	14	0.56
15	21.3	R1/2	95	14	65	20	35	45	2	4	14	0.62
20	26.9	R3/4	105	16	75	24	45	58	2	4	14	0.92
25	33.7	R1	115	16	85	24	52	68	2	4	14	1.1
32	42.4	R1.1/4	140	16	100	26	60	78	2	4	18	1.59
40	48.3	R1.1/2	150	16	110	26	70	88	3	4	18	1.77
50	60.3	R2	165	18	125	28	85	102	3	4	18	2.41
65	76.1	R2.1/2	185	18	145	32	105	122	3	4	18	3.13
80	88.9	R3	200	20	160	34	118	138	3	4	18	3.95
100	114.3	R4	220	20	180	38	140	158	3	8	18	4.38
125	139.7	R3	250	22	210	40	168	188	3	8	18	5.99
150	168.3	R4	285	22	240	44	196	212	3	8	22	7.42

## DIN 2567 THREADED FLANGE WITH NECK PN25 AND PN40



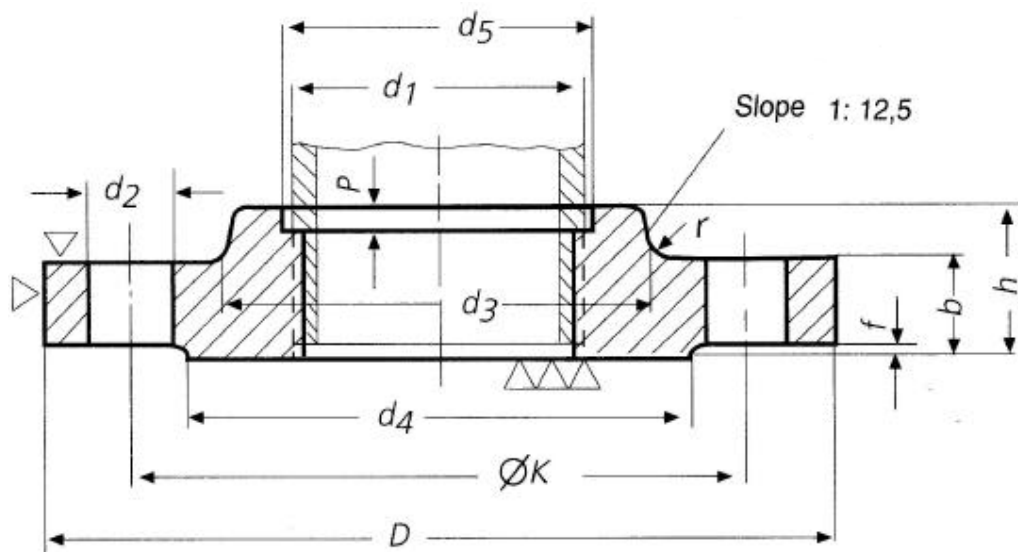
DN	D1	Thread DIN 2999	D	b	k	h1	d3	d4	f	No. of holes	Threa d	d2	KG
6	10.2	R1/8	75	14	50	20	20	32	2	4	M10	11	0.388
8	13.5	R1/4	80	14	55	20	25	38	2	4	M10	11	0.450
10	17.2	R3/8	90	16	60	22	30	40	2	4	M12	14	0.630
15	21.3	R1/2	95	16	65	22	35	45	2	4	M12	14	0.710
20	26.9	R3/4	105	18	75	26	45	58	2	4	M12	14	1.030
25	33.7	R1	115	18	85	28	52	68	2	4	M12	14	1.280
32	42.4	R1.1/4	140	18	100	30	60	78	2	4	M16	18	1.870
40	48.3	R1.1/2	150	18	110	32	70	88	3	4	M16	18	2.140
50	60.3	R2	165	20	125	34	85	102	3	4	M16	18	2.850
65	76.1	R2.1/2	185	22	145	38	105	122	3	8	M16	18	3.850
80	88.9	R3	200	24	160	40	118	138	3	8	M16	18	4.800
100	114.3	R4	235	24	190	44	145	162	3	8	M20	22	6.430
125	139.7	R5	270	26	220	48	170	188	3	8	M24	26	8.770
150	165.1	R6	300	28	250	52	200	218	3	8	M24	26	10.500

## DIN 23 THREADED FLANGE WITH NECK PN64



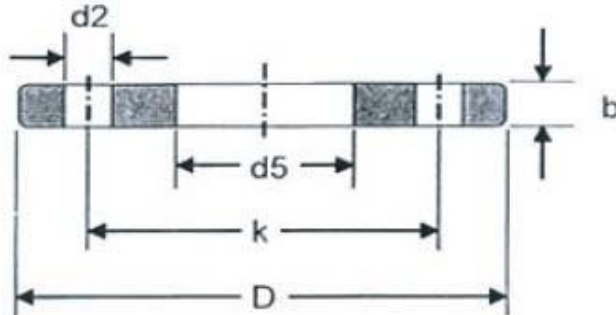
DN	d1	Thread DIN 2999	D	b	k	h1	d3	d5	P	r	d4	f	No. of holes	Thread	d2	KG
10 to 40	See DIN 2569															
50	60.3	R2	180	26	135	36	90	61	7	3	108	3	4	M20	22	4.29
65	76.1	R2.1/2	205	26	160	40	112	77	7	3	132	3	8	M20	22	5.48
80	88.9	R3	215	28	170	44	125	90	7	3	142	3	8	M20	22	6.42
100	114	R4	250	30	200	52	152	116	7	3	170	3	8	M24	26	9.25
125	140	R5	295	34	240	56	185	141	7	3	205	3	8	M27	30	14.4
150	165	R6	345	36	280	60	215	167	7	3	240	3	8	M30	33	20.7

## DIN 24 THREADED FLANGE WITH NECK PN100



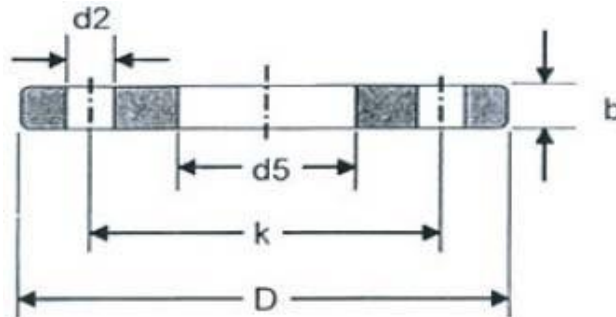
DN	d1	Thread DIN 2999	D	b	k	h1	d3	d5	P	r	d4	f	No. of holes	Thread	d2	KG
10	17.2	R3/8	100	20	70	28	40	18	4	2	50	2	4	M12	14	1.08
15	21.3	R1/2	105	20	75	28	43	22	6	2	55	2	4	M12	14	1.19
20	26.9	R3/4	130	22	90	30	52	28	7	2	68	2	4	M16	18	2.00
25	33.7	R1	140	24	100	32	60	35	7	3	78	2	4	M16	18	2.54
32	42.4	R1.1/4	155	24	110	32	68	43	7	3	85	2	4	M20	22	2.99
40	48.3	R1.1/2	170	26	125	34	80	49	7	3	98	3	4	M20	22	3.87
50	60.3	R2	195	28	145	36	95	61	7	3	115	3	4	M24	26	5.42
65	76.1	R2.1/2	220	30	170	40	118	77	7	3	140	3	8	M24	26	7.11
80	88.9	R3	230	32	180	44	130	90	7	3	150	3	8	M24	26	8.21
100	114	R4	265	36	210	52	158	116	7	3	175	3	8	M27	30	12.1
125	140	R5	315	40	250	56	188	141	7	3	210	3	8	M30	33	18.6
150	165	R6	355	44	290	60	225	167	7	3	250	3	12	M30	33	25.1

## DIN 2573 FLAT FLANGE FOR WELDING (SLIP ON) PN6



DN	ISO	DIN	d5	D	b	k	No. of Holes	d2	KG
10	-	14	14.5	75	12	50	4	11	0.36
	17.2	-	17.7	75	12	50	4	11	0.36
15	-	20	21	80	12	55	4	11	0.41
	21.3	-	22	80	12	55	4	11	0.4
20	-	25	26	90	14	65	4	11	0.6
	26.9	-	27.6	90	14	65	4	11	0.59
25	-	30	31	100	14	75	4	11	0.74
	33.7	-	34.4	100	14	75	4	11	0.72
32	-	38	39	120	16	90	4	14	1.19
	42.4	-	43.1	120	16	90	4	14	1.16
40	-	44.5	45.5	130	16	100	4	14	1.39
	48.3	-	49	130	16	100	4	14	1.35
50	-	57	58.1	140	16	110	4	14	1.52
	60.3	-	61.1	140	16	110	4	14	1.49
65	76.1	-	77.1	160	16	130	4	14	1.86
80	88.9	-	90.3	190	18	150	4	14	2.96
100	-	108	109.6	210	18	170	4	18	3.42
	114.3	-	115.9	210	18	170	4	18	3.26
125	-	133	134.8	240	20	200	8	18	4.54
	139.7	-	141.6	240	20	200	8	18	4.31
150	-	159	161.1	265	20	225	8	18	5.34
	168.2	-	170.5	265	20	225	8	18	4.76
200	219.1	-	221.8	320	22	280	8	18	6.87
250	-	267	270.2	325	24	335	12	18	9.42
	273	-	276.2	325	24	335	12	18	8.94
300	323.9	-	327.6	440	24	395	12	22	11.91
350	355.6	-	359.7	480	26	445	12	22	16.52
	-	368	372.2	490	26	445	12	22	15.35
400	406.4	-	411	540	28	495	16	22	18.84
	-	419	423.7	540	28	495	16	22	18.01
450	457	-	462.3	595	30	550	16	22	24.52
500	508	-	513.6	645	30	600	20	22	26.37

## DIN 2576 FLAT FLANGE FOR WELDING (SLIP ON) PN10



DN	ISO	DIN	d5	D	b	k	No. of Holes	d2	KG
10	-	14	14.50	90	14	60	4	14	0.61
	17.2	-	17.70	90	14	60	4	14	0.60
15	-	20	21.00	95	14	65	4	14	0.67
	21.3	-	22.00	95	14	65	4	14	0.67
20	-	25	26.00	105	16	75	4	14	0.94
	26.9	-	27.60	105	16	75	4	14	0.94
25	-	30	31.00	115	16	85	4	14	1.13
	33.7	-	34.40	115	16	85	4	14	1.11
32	-	38	39.00	140	16	100	4	18	1.66
	42.4	-	43.10	140	16	100	4	18	1.62
40	-	44.5	45.50	150	16	110	4	18	1.89
	48.3	-	49.00	150	16	110	4	18	1.85
50	-	57	58.10	165	18	125	4	18	2.50
	60.3	-	61.10	165	18	125	4	18	2.46
65	76.1	-	77.10	185	18	145	4	18	2.99
	88.9	-	90.30	200	20	160	8	18	3.61
100	-	108	109.60	220	20	180	8	18	4.17
	114.3	-	115.90	220	20	180	8	18	3.99
125	-	133	134.80	250	22	210	8	18	5.66
	139.7	-	141.60	250	22	210	8	18	5.41
150	-	159	161.10	285	22	240	8	22	6.97
	168.3	-	170.50	285	22	240	8	22	6.55
175	193.7	-	196.10	315	24	270	8	22	8.42
200	219.1	-	221.80	340	24	295	8	22	9.28
250	-	267	270.20	395	26	350	12	22	12.36
	273	-	276.20	395	26	350	12	22	11.85
300	323.9	-	327.60	445	26	400	12	22	13.61
350	355.6	-	359.70	505	28	460	16	22	20.35
	-	368	372.20	505	28	460	16	22	18.77
400	406.4	-	411.00	565	32	515	18	26	27.52
	-	419	423.70	565	32	515	18	26	35.43
450	457	-	462.30	615	38	565	20	26	35.11
500	508	-	613.60	670	38	620	20	26	40.20
600	610	-	615.50	780	40	725	20	26	51.87

**INVICTA INDIA PVT. LTD.**

PHOTO	ITEM NO.	DESCRIPTION
 <p>50.5MM QTY-1345 PCS WT: 0.469 KG.</p>		50.5MM
 <p>832-51-36 QTY-1695 PCS WT: 0.400 KG.</p>		832-51-36
 <p>549-9-5 QTY-2175 PCS 0.276 KG.</p>		549-9-5
 <p>546-12-5 QTY-2475 PCS 0.270 KG.</p>		546-12-5
 <p>5496 QTY-3525 PCS 0.363 KG.</p>		5496
 <p>FL48 QTY-495 PCS 0.318 KG.</p>		FL48

**INVICTA INDIA PVT. LTD.**

<b>PHOTO</b>	<b>ITEM NO.</b>	<b>DESCRIPTION</b>
		<p align="center"><b>77.5X56.7X42.5mm</b></p>
		<p align="center"><b>2750</b></p>
		<p align="center"><b>6115-9043</b></p>
		<p align="center"><b>M10 Thread</b></p>
		<p align="center"><b>JAGUAR (549-8-5) BIG</b></p>
		<p align="center"><b>FL-67</b></p>

**INVICTA INDIA PVT. LTD.**

<b>PHOTO</b>	<b>ITEM NO.</b>	<b>DESCRIPTION</b>
		<b>831-22-01</b>
		<b>RB 1183</b>
		<b>FL-46</b>
		<b>DIVO NO. 13</b>
		<b>46101, 10mm</b>
		<b>831-22-01</b>

**INVICTA INDIA PVT. LTD.**

<b>PHOTO</b>	<b>ITEM NO.</b>	<b>DESCRIPTION</b>
		<b>4050A</b>
		<b>NO. 48</b>
		<b>SUBARU</b>
		<b>50-2-86, 8mm</b>
		<b>NO. 3</b>
		<b>HD-1611</b>

**INVICTA INDIA PVT. LTD.**

<b>PHOTO</b>	<b>ITEM NO.</b>	<b>DESCRIPTION</b>
		<b>NO. 10</b>
		<b>6117-9015</b>
		<b>BW 88</b>
		<b>FL-150</b>
		<b>VW 380</b>
		<b>FL-002</b>

**INVICTA INDIA PVT. LTD.**

<b>PHOTO</b>	<b>ITEM NO.</b>	<b>DESCRIPTION</b>
		<b>77.5X56.7X36mm</b>
		<b>FL-107</b>
		<b>4737</b>
		<b>842-22-29</b>
		<b>FL-58</b>
		<b>MFD, SUBSHI</b>







**INVICTA INDIA PVT. LTD.**

<b>PHOTO</b>	<b>ITEM NO.</b>	<b>DESCRIPTION</b>
		<b>608382</b>
		<b>OPEL 45.3</b>
		<b>H-2528</b>
		<b>SMALL FLANGE</b>
		<b>RB-1180</b>
		<b>541-03-02</b>

**INVICTA INDIA PVT. LTD.**

<b>PHOTO</b>	<b>ITEM NO.</b>	<b>DESCRIPTION</b>
 <p>FORD-50-2-80 QTY-58 Pcs WT: 0.203 KG.</p>		<b>FORD 50-2-80</b>
 <p>150370 QTY-147 Pcs WT: 0.759 KG.</p>		<b>150370</b>
 <p>552-01-06 QTY - 197Pcs WT: 0.544 KG.</p>		<b>552-01-06</b>
 <p>RVO-222 QTY-513 Pcs WT: 0.221KG.</p>		<b>RVO-222</b>
 <p>SET OF 2 QTY - 5828 Pcs WT: 0.254 KG.</p>		<b>SET OF 2</b>
 <p>OPEL 50.3 QTY 130 Pcs WT: 0.254 KG</p>		<b>OPEL 50.3</b>



**INVICTA INDIA PVT. LTD.**

PHOTO	ITEM NO.	DESCRIPTION
 <p>FL-117 QTY - 5 Pcs WT: 0.211KG.</p>		FL-117
 <p>FLANGE(A) QTY - 7598 Pcs WT: 0.342 KG.</p>		FLANGE (A)
 <p>549-46-17 QTY-170 Pcs WT: 0.041 KG.</p>		549-46-17
 <p>J TYPE FLANGE QTY- 3080 Pcs WT: 0.215K.G</p>		"J" TYPE FLANGE
 <p>5844 QTY-2158 Pcs WT: 0.187 KG.</p>		5844
 <p>549-22-1 QTY-NIL</p>		549-22-1

**INVICTA INDIA PVT. LTD.**

<b>PHOTO</b>	<b>ITEM NO.</b>	<b>DESCRIPTION</b>
		<b>8mm(50-2-90)FORD</b>
		<b>150237</b>
		<b>TYPE 2</b>
		<b>6108-3043</b>
		<b>6109-9042</b>
		<b>FORGING FLANGE</b>






**INVICTA INDIA PVT. LTD.**

<b>PHOTO</b>	<b>ITEM NO.</b>	<b>DESCRIPTION</b>
 <p>NO. 4762 QTY-95 Pcs WT: 0.423</p>		<p align="center"><b>NO. 4762</b></p>
 <p>8MM E-510064 QTY-3790 Psc WT: 0.123 KG</p>		<p align="center"><b>8mm, E-510064</b></p>
 <p>HD-1604 QTY-678</p>		<p align="center"><b>HD-1604</b></p>
 <p>40085 QTY-6925 Psc WT: 0.269KG.</p>		<p align="center"><b>40085</b></p>
 <p>5560MM QTY-4850 PCS WT: 0.339 KG.</p>		<p align="center"><b>5560 mm</b></p>
 <p>FL-115 QTY-1775 Pcs WT: 0.246 KG.</p>		<p align="center"><b>FL-115</b></p>

**INVICTA INDIA PVT. LTD.**

<b>PHOTO</b>	<b>ITEM NO.</b>	<b>DESCRIPTION</b>
 <p>WITHOUT NO FLANGE QTY-360 PCS</p>		<b>WITHOUT NO. FLANGE</b>
 <p>FLANGE NO1 QTY-968 PCS WT: 0.144 KG.</p>		<b>FLANGE NO. 1</b>
 <p>5560MM QTY-4850 PCS WT: REPEAT</p>		<b>5560mm</b>
 <p>64.5 MM QTY-4795 PCS WT: 0.358 KG.</p>		<b>64.5mm</b>
 <p>45(S) QTY-598Pcs</p>		<b>45(S)</b>
 <p>FB 222 QTY-7 PCS WT: 0.532 KG.</p>		<b>FB 222</b>




**INVICTA INDIA PVT. LTD.**

<b>PHOTO</b>	<b>ITEM NO.</b>	<b>DESCRIPTION</b>
 <p align="center">NUT WELDE FLANGE QTY NIL</p>		<p align="center"><b>NUT WELDE FLANGE</b></p>
 <p align="center">8MM SF 69096 QTY-580 PCS WT: 0.163 KG.</p>		<p align="center"><b>8mm, SF 69096</b></p>
 <p align="center">16 MM 150361 QTY - 3 PCS WT: 0.362 KG.</p>		<p align="center"><b>16mm, 150361</b></p>
 <p align="center">551 -30-1 QTY-440 PCS WT: 0.407 KG.</p>		<p align="center"><b>551-30-1</b></p>
 <p align="center">FL209 QTY-898 PCS WT: 0.252 KG.</p>		<p align="center"><b>FL209</b></p>
 <p align="center">2781 QTY-5300 PCS WT: 0.196 KG.</p>		<p align="center"><b>2781</b></p>

**INVICTA INDIA PVT. LTD.**

<b>PHOTO</b>	<b>ITEM NO.</b>	<b>DESCRIPTION</b>
		10mm
		FL227
		C. JEET
		FL-240
		6116-9043
		551-25-1

**INVICTA INDIA PVT. LTD.**

<b>PHOTO</b>	<b>ITEM NO.</b>	<b>DESCRIPTION</b>
		6112-9046
		10mm, 46061
		821-25-02, 549-25-02

## **CONTACT INFORMATION**

Invicta India Pvt. Ltd.  
N-258/B GK-1  
New Delhi  
India

REX Consolidated  
80 DLF Industrial Area Phase 1  
Faridabad Haryana-121003  
India

© Copyright 2016 Invicta India Pvt. Ltd.

All information and data stated in this Product Range document has been compiled with utmost care. Nevertheless, Invicta accepts no liability for any errors, omissions or other inaccuracies contained herein. Subject to change without notice. Reprinting or reproduction, in whole or in part, including of photographs, illustrations or graphics, is not permitted without the prior written consent of Invicta India Pvt. Ltd.. We reserve all rights in connection with this document. Any similarity or resemblance is unintended and is merely a coincidence.

The vehicle applications cited in this Product Range document may possibly be valid only up to the date printed on the last page of the document. All references made in this Product Range document to the item numbers of vehicle manufacturers and/or competitors are provided for the purpose of comparison only. Such information is not allowed to be used in invoices issued to vehicle owners.

For enquiries, please email us : [rahul@invictaindia.com](mailto:rahul@invictaindia.com)

All drawings & illustrations are the property right of INVICTA and cannot be copied, duplicated or re-printed in any form without the prior written consent from INVICTA

Invicta Copyright @ 2016 All Right Reserved