



V-BAND CLAMPS



AVAILABLE MATERIALS

ZINC PLATING ST-37, STAINLESS STEEL 304, STAINLESS STEEL 316, AND STAINLESS STEEL 430

APPLICATIONS

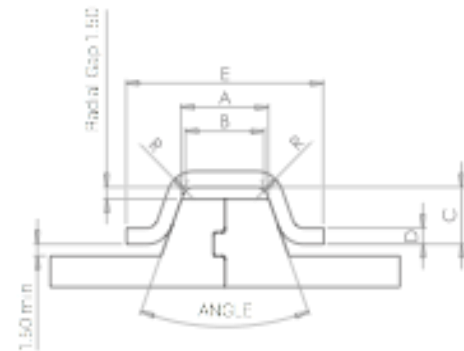
Engines, Aerospace, Turbochargers, Petrochemicals, Exhaust Systems, and Communications V-Band Clamps provide fast and secure coupling for connecting flanged joints.

These V-Band clamps feature high strength and positive sealing integrity.

Custom Sizes available - Please contact our sales team to discuss flange specifications.

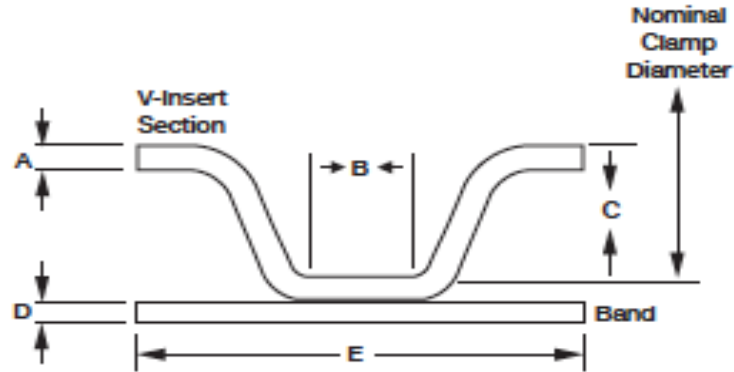
TECHNICAL INFORMATION

Profile Reference	*A' Flange Tip Width mm	*B' Tip Width mm	*C' Retainer Depth mm	*D' Material Thickness mm	*E' Overall Width mm	*R' Radius	Internal Angle
A	6.35	5.26	7.14	1.5	19.05	1.5	40
D	7.4	6.65	3.58	1.22	16.0	0.41	40
E	11.25	10.16	7.14	1.22	25.4	0.8	40
S	11.25	10.16	7.14	2.0	25.4	1.5	40
LL	9.3	8.2	12.5	2.5	30.0	2.5	40
MM	15.1	14.0	20.0	3.0	45.0	3.0	40
AS	8.1	7.0	7.14	2.0	25.4	1.5	40
AX	15.6	14.5	7.0	1.5	22.8	1.5	40
BA	9.0	7.9	5.2	1.5	15.0	1.0	40
BP	10.25	9.14	7.75	2.0	25.5	2.0	40



4.0 b	≥ ø 89	5.0 a	≥ ø 82	5.3 b	≥ ø 110	6.0 a	≥ ø 100	6.5 a	≥ ø 120
STC	•	•	•	•	•	•	•	•	•
GRC	•	•	•	•	•	•	•	•	•

TECHNICAL INFORMATION



Part Number	Nominal Diameter	A Insert Thickness	B Apex Width	C Insert Depth	D Band Thickness	E Band Width
	44.5	1.27	6.65	3.58	0.63	15.87
	80.0	1.27	6.65	3.58	0.88	19.05
	81.5	1.27	6.65	3.58	0.88	19.05
	85.9	1.95	5.25	7.13	1.01	22.22
	97.0	1.95	5.25	7.13	1.01	22.22
	97.0	1.95	5.25	7.13	1.27	22.22
	98.6	1.27	10.16	7.13	1.01	22.22
	100.6	1.95	5.25	7.13	1.57	22.22
	102.6	1.27	6.25	3.58	0.88	19.05
	108.0	1.27	10.16	7.13	1.01	22.22
	109.5	1.95	5.25	7.13	1.01	22.22
	114.3	1.27	6.65	3.58	0.88	19.05
	117.1	1.27	3.96	7.13	0.88	19.05
	120.7	1.27	10.16	7.13	1.01	22.22
	122.2	1.95	5.25	7.13	1.01	22.22
	133.4	1.27	6.65	3.58	0.88	19.05
	147.6	1.27	5.25	7.13	1.57	22.22
	149.4	1.27	10.16	7.13	1.01	22.22
	149.9	1.27	6.65	3.58	0.88	19.05
	152.4	1.27	3.96	7.13	0.88	19.05
	242.8	1.27	13.46	5.46	0.88	19.05
	242.8	1.27	13.97	7.13	0.88	19.05
	271.5	1.27	5.25	7.13	1.57	22.22

V-BAND CLAMP (EUROPEAN STYLE)



CLOSURE TYPES

STC – Straight Trunnion Closure



Advantages:

- Low-friction losses
- High-strength precision-machined components
- Manufactured from consistently high-quality materials
- State-of-the-art automated manufacturing
- Competitively priced

QRC – Quick-Release Closure



Advantages:

- All the advantages of STC-type closures
- Rapid closing and opening
- Captive closure components
- Significantly shorter installation times
- Closure bolt secured during tightening

Single-closure 3 profile segments Dia ≤ 300	<p>STC</p>	<p>QRC</p>
Double-closure 2 profile segments Min dia 200 mm Max dia 500 mm		

Band widths & closure sizes

V-Band clamps are manufactured in two different band widths and with different closures, depending on the profile type concerned:

Closure type	Cover band 1.0 x 20 mm	Cover band 1.5 x 25 mm
STC	8øt	8øt
QRC	M 6 x 50	M 8 x 70

V-BAND CLAMP (T-BOLT)



**DOUBLE HARDWARE T-BOLT
V-BAND CLAMP**



**ROLL FORMED T-BOLT V-BAND
CLAMP**



<p>Worm Drive V-Band Clamp</p> <ul style="list-style-type: none"> ● Light Duty - Designed for Low Pressure Applications ● Hardware - $\frac{5}{16}$" slotted hex-screw ● Sizes: 1.75" - 7" (2" - 5.50") ● 3 V-inserts 	
<p>Quick Release V-Band Clamp</p>	
<p>Spring Loaded V-Band Clamp (Turbocharger Applications)</p>	
<p>Thumb-Turn V-Band Clamp</p> <ul style="list-style-type: none"> ● Light Duty - Designed for Low Pressure Applications ● Thumb Screw for Hand Tightening. ● Sizes: 1.75" - 7" (2" - 5.50") ● 3 V-inserts 	

CONTACT INFORMATION

Invicta India Pvt. Ltd.
N-258/B GK-1
New Delhi
India

REX Consolidated
80 DLF Industrial Area Phase 1
Faridabad Haryana-121003
India

© Copyright 2016 Invicta India Pvt. Ltd.

All information and data stated in this Product Range document has been compiled with utmost care. Nevertheless, Invicta accepts no liability for any errors, omissions or other inaccuracies contained herein. Subject to change without notice. Reprinting or reproduction, in whole or in part, including of photographs, illustrations or graphics, is not permitted without the prior written consent of Invicta India Pvt. Ltd.. We reserve all rights in connection with this document. Any similarity or resemblance is unintended and is merely a coincidence.

The vehicle applications cited in this Product Range document may possibly be valid only up to the date printed on the last page of the document. All references made in this Product Range document to the item numbers of vehicle manufacturers and/or competitors are provided for the purpose of comparison only. Such information is not allowed to be used in invoices issued to vehicle owners.

For enquiries, please email us : rahul@invictaindia.com